

A Global Solar Energy Provider

Topco Solar



01

WHO WE ARE

A Global Clean Energy Products and Services Provider



TOPCO SOLAR

A Global Solar Energy Provider

Topco Solar produces a wide range of PV modules that are suitable for all system types including residential, commercial, industrial and utility system. All panels are built in a modern facility with the latest technology for soldering, laminating, and framing, combined with a committed workforce. Topco Solar ensures your solar panels operate with uncompromised performance and dependable results.

High Quality-oriented US Brand

Topco is inspired and motivated by the grand idea of solar energy, founded by a team of experts with at least 10 years experience in PV industry. The brand stands for TOP Quality - the never-ending pursuit of our team.



**US
Brand**



**Global
Services**



**1.5GW
Capacity**



**Quality
Oriented**

Global Network

TOPCO SOLAR



Headquarter
California, USA




R&D Center
Frankfurt, Germany

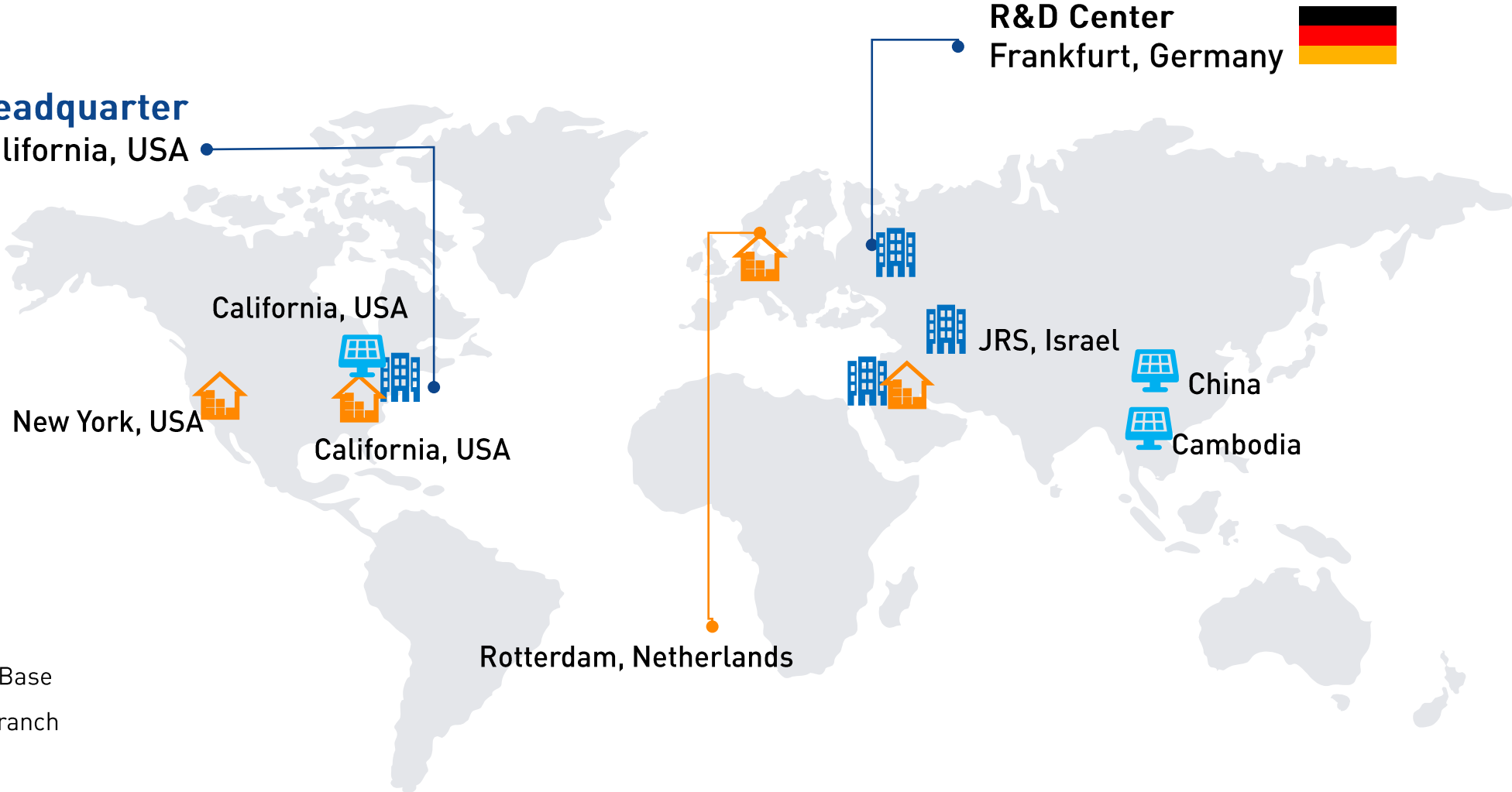


California, USA
New York, USA
California, USA

JRS, Israel
China
Cambodia

Rotterdam, Netherlands

-  Manufacturing Base
-  Headquarter/Branch
-  Warehouse



01.

Increase Scale Returns

Reduce the complexity of products and improve economies of scale through standardization, modularization and serialization

02.

Improve Project Profitability

Efficient demand forecasting, inventory management, and supply chain execution lead to better product prices, higher execution efficiency, and increased power station profitability

03.

All-round Supply Service

strong ability to control the logistics of sea and land transportation. Through Topco Solar warehouses can be set up within one kilometer of the surrounding area to support JIT delivery



02

PRODUCTS AND TECHNOLOGY

Global Leading Solar Module High Technology



High Efficiency Solar Modules

S-series

Singled Solar Module

Incorporating Shingling technology and flexible adhesive, give rise to high density layout

420-675W



H-series

Half-cut Solar Module

Advanced module technology delivers superior module efficiency

420-675W



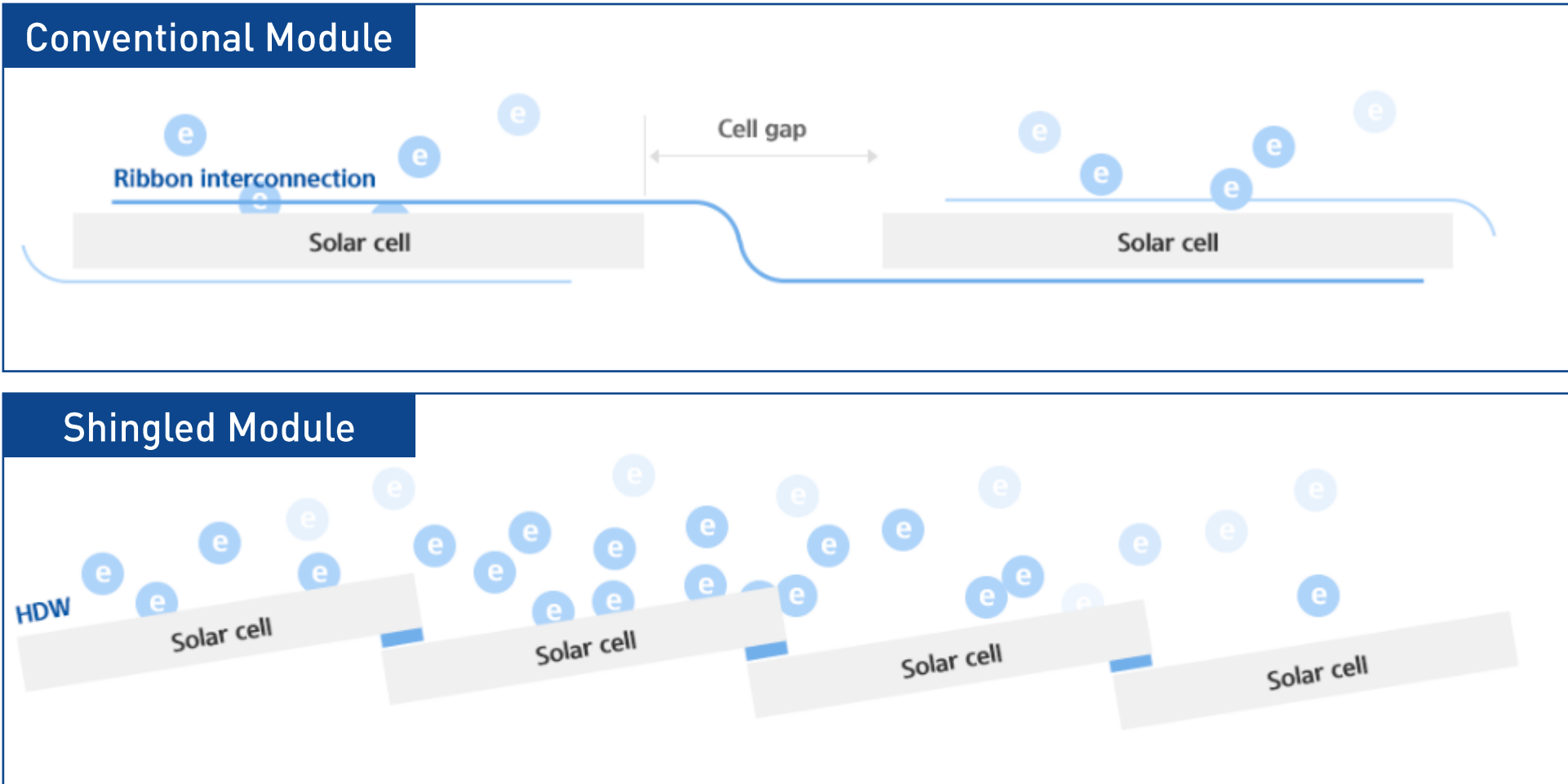
TOPCO SOLAR

S-series

High Efficiency Shingled Module

Shingling Technology

High Efficiency Module with Increased Active Area



Shingling Technology

The Topco Solar S-series modules applied shingled technology , which uses laser slicing to cut the whole cell into several cell strips and uses conductive glue to flexibly connect the cell strips in a limited area through lamination, to achieve a cell spacing close to zero.



**High
Efficiency**



**Guaranteed
Reliability**



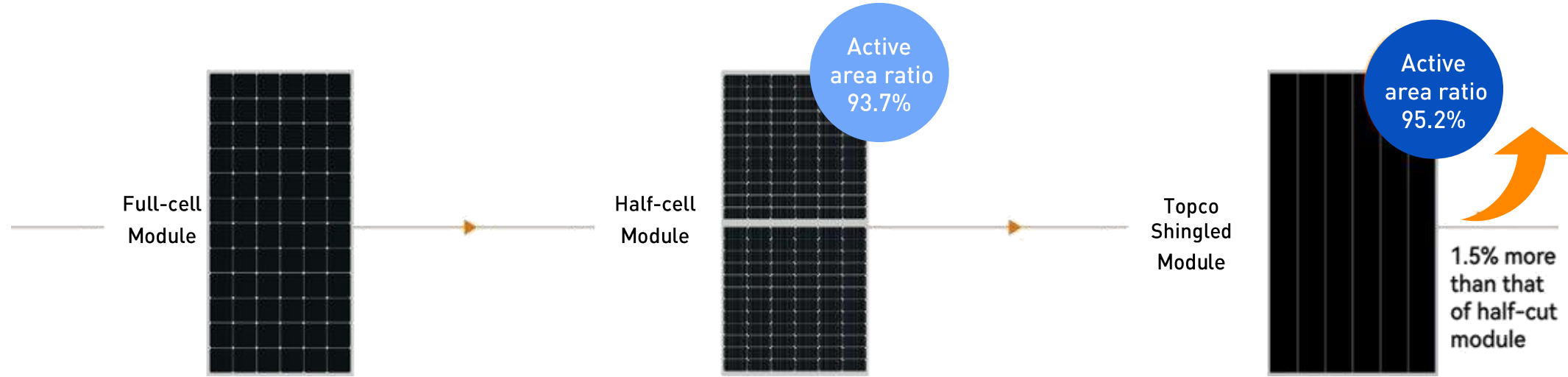
Eco-friendly



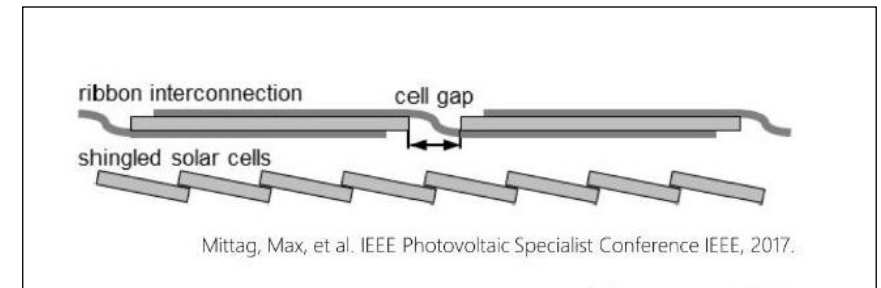
Aesthetic Value

Shingling Technology

High Efficiency Module with Increased Active Area



- Making full use of the limited area of the module, place 5% more cells and effectively increasing the light-receiving area of the module; absence of busbar reduces shading area and enhance absorbing area, increase power output by 20W-25W meanwhile improve module efficiency



Guaranteed Reliability



Low Risk of Hot Spot

The shingling technology utilizes fully parallel circuit design, which has better degradation, less hot spot and improved performance under low-light



Low Micro-crack Risk

The cells are flexibly connected by conductive adhesive, no soldering ribbon is used, lower the risk of micro crack. Thus, Topco solar can provide 30-year liner power warranty for shingled solar module.



Lower Operating Temperature

Using conductive glue to realize the interconnection of the cell slices, which reduces the loss during electricity transmission and effectively reduces the heat loss.

TOPCO SOLAR



Eco-Friendly

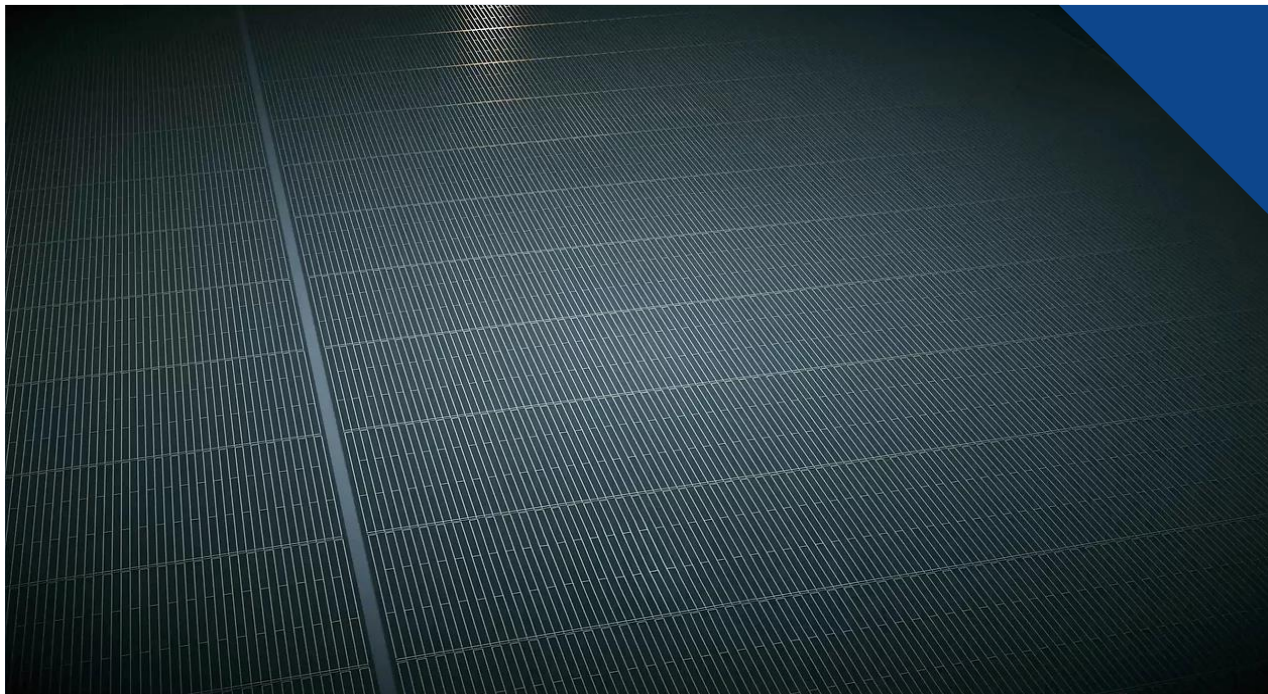
No ribbons are used, reduces **60%** of the use in the production process of module, which is environmentally friendly.



Aesthetic Value

The cell layout of the shingled module is not limited, vertical and horizontal structure are both feasible.

As its surface is not blocked by busbar or ribbon, the appearance is highly consistent, high density and less cell gap give rise to the aesthetic value.

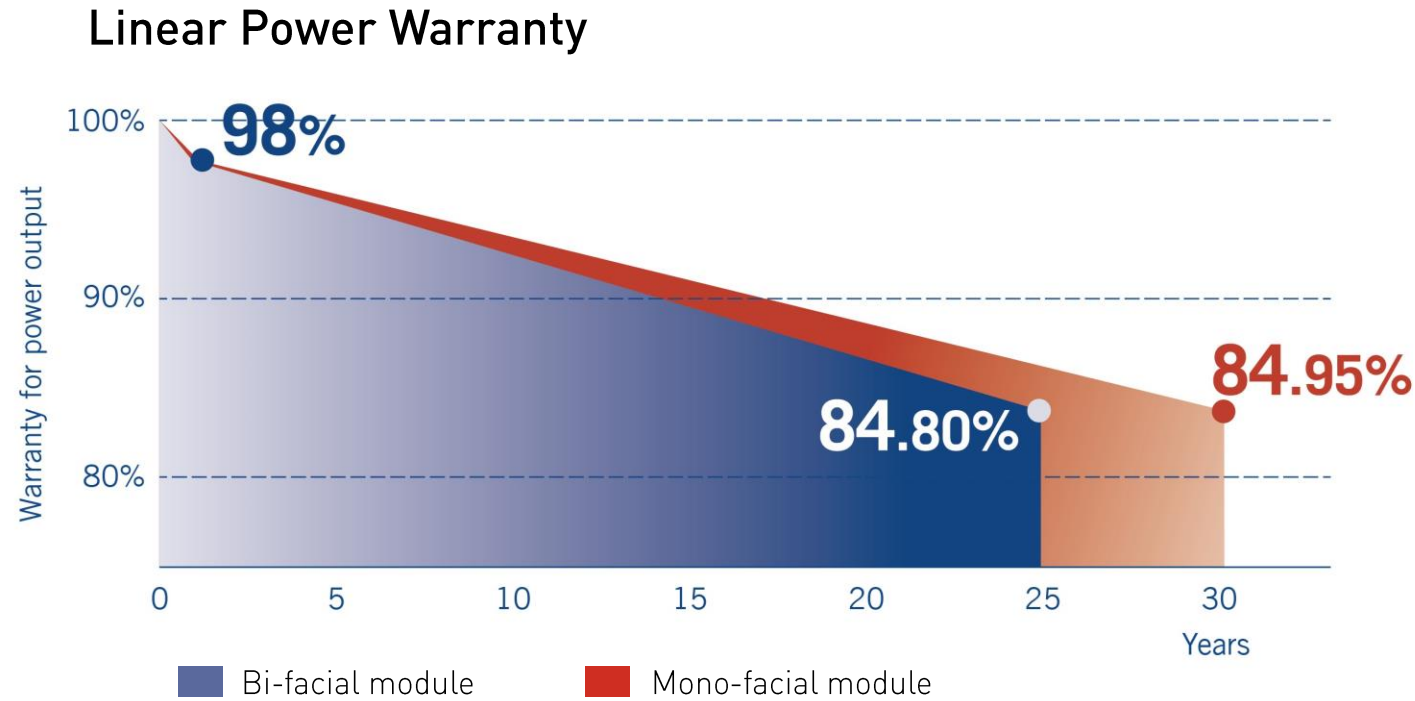


Shingling Technology

Shingled solar module surface is not blocked by busbar or ribbon, the appearance is highly consistent, high density and less cell gap give rise to the aesthetic .

Certification and Warranty

TOPCO SOLAR



< 2%

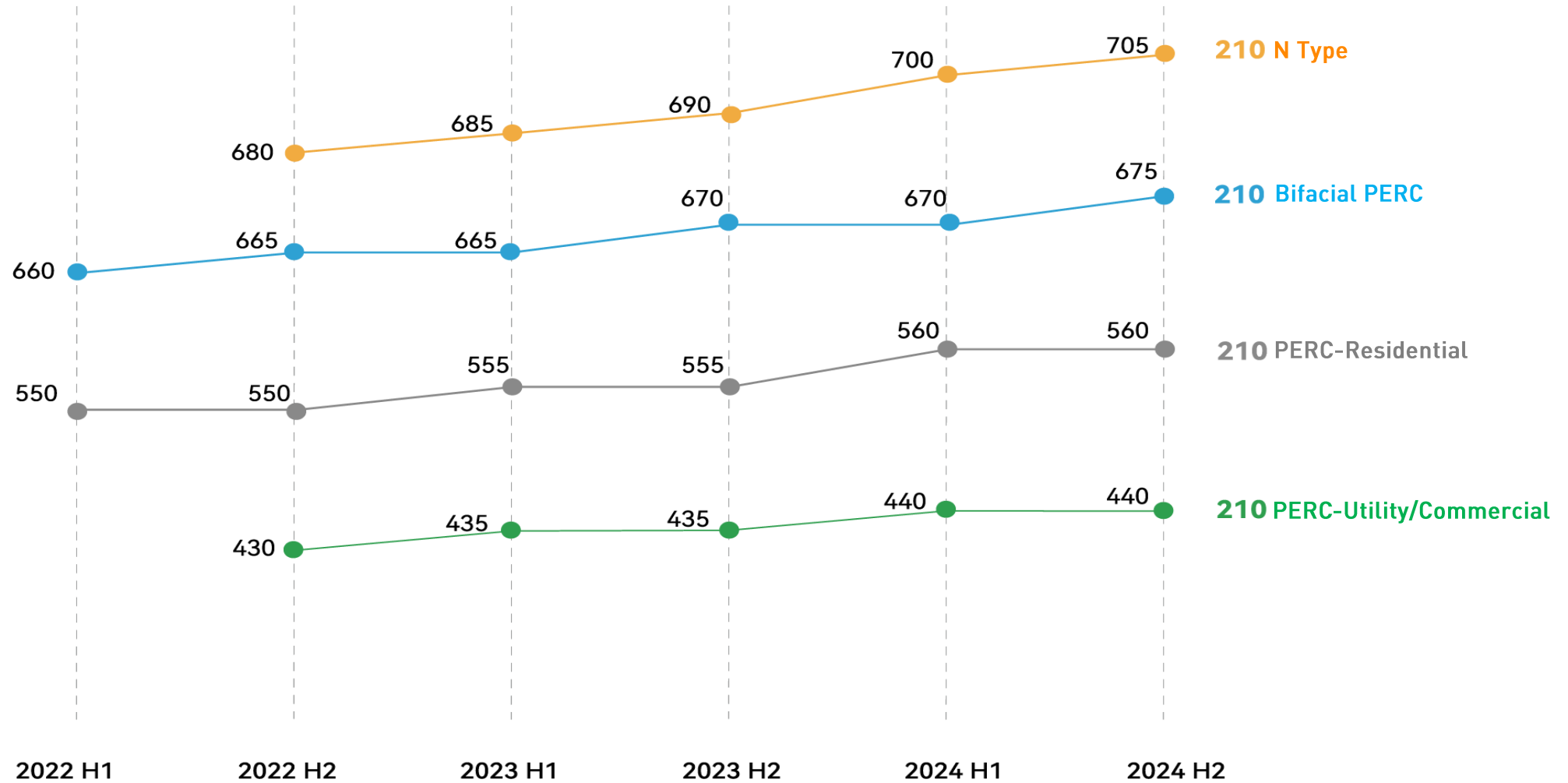
1st year degradation

< -0.55%

Linear annual degradation
after the 1st year

Product Roadmap

TOPCO SOLAR



TOPCO SOLAR

All-In-One Energy Storage System

Powered by CATL





03

PROJECT REFERENCES

A Global Clean Energy Products and Services Provider



RESIDENTIAL

Location: Madrid, Spain

Estimated CO2 Reduced Annually: 9.3 Tons

7.8KW

RESIDENTIAL

Location: Brazil

Estimated CO2 Reduced Annually: 12.0 Tons

10KW





RESIDENTIAL

Location: Australia

Estimated CO2 Reduced Annually: 12.6 Tons

10.53KW

COMMERCIAL

Location: Netherlands

Estimated CO2 Reduced Annually: 993 Tons

0.83MW





FLOATING

Location: Si Hong, Jiangsu Province, China
Estimated CO₂ Reduced Annually: 239,280 Tons

200MW

GROUND-MOUNTED

Location: Marlow, England
Estimated CO₂ Reduced Annually: 2,273.2 Tons

1.9MW





FLOATING

Location: Si Hong, Jiangsu Province, China
Estimated CO2 Reduced Annually: 239,280 Tons

60MW

GROUND-MOUNTED

Location: Ding An, Hainan Province, China
Estimated CO2 Reduced Annually: 71,784 Tons

20MW



TOPCO SOLAR

Thank you

